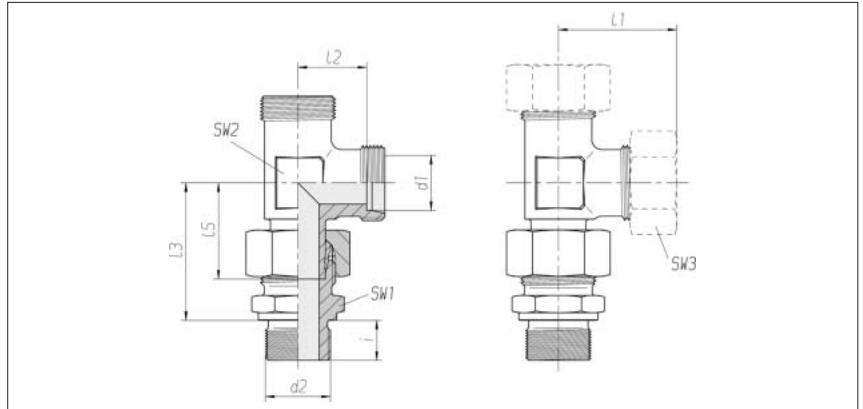


## Adjustable stud barrel tees

Male connector

Thread:  
Whitworth pipe thread,  
straight

Sealed with seal edge



Series	Pressure	d2		SW1	SW2	SW3	l1	l2	l3	l5	i	kg/100	Order No.	Order No.
Tube OD							approx.					approx.	Single component	*
d1														
L 6	PN 315	G 1/8 A		14	12	14	27	12	34.5	26	8	4.8	0 1 63 01 20 07**	0 1 63 00 20 07
L 8	PN 315	G 1/4 A		19	12	17	29	14	37.5	27.5	12	7.2	0 1 63 06 20 07	0 1 63 05 20 07
L 10	PN 315	G 1/4 A		19	14	19	30	15	40	29	12	8.9	0 1 63 11 20 07	0 1 63 10 20 07
L 12	PN 315	G 3/8 A		22	17	22	32	17	42	29.5	12	11.8	0 1 63 16 20 07	0 1 63 15 20 07
L 15	PN 315	G 1/2 A		27	19	27	36	21	46.5	32.5	14	20.4	0 1 63 21 20 07	0 1 63 20 20 07
L 18	PN 315	G 1/2 A		27	24	32	40	23.5	50	35.5	14	26.0	0 1 63 26 20 07	0 1 63 25 20 07
L 22	PN 160	G 3/4 A		32	27	36	44	27.5	55	38.5	16	29.2	0 1 63 31 20 07	0 1 63 30 20 07
L 28	PN 160	G 1 A		41	36	41	47	30.5	59	41.5	18	55.9	0 1 63 36 20 07	0 1 63 35 20 07
L 35	PN 160	G 1 1/4 A		50	41	50	56	34.5	68.5	51	20	86.9	0 1 63 41 20 07	0 1 63 40 20 07
L 42	PN 160	G 1 1/2 A		55	50	60	63	40	75	56	22	136.8	0 1 63 46 20 07	0 1 63 45 20 07
S 6	PB 630	G 1/4 A		19	12	17	31	16	40	27	12	9.1	0 1 63 51 20 07	0 1 63 50 20 07
S 8	PB 630	G 1/4 A		19	14	19	32	17	42.5	27.5	12	13.6	0 1 63 56 20 07	0 1 63 55 20 07
S 10	PB 630	G 3/8 A		22	17	22	34	17.5	45	30	12	15.5	0 1 63 61 20 07	0 1 63 60 20 07
S 12	PB 630	G 3/8 A		22	17	24	38	21.5	48	31	12	19.1	0 1 63 66 20 07	0 1 63 65 20 07
S 14	PB 630	G 1/2 A		27	19	27	40	22	54	35	14	26.8	0 1 63 71 20 07	0 1 63 70 20 07
S 16	PB 400	G 1/2 A		27	24	30	43	24.5	55	36.5	14	30.9	0 1 63 76 20 07	0 1 63 75 20 07
S 20	PB 400	G 3/4 A		32	27	36	48	26.5	65	44.5	16	49.8	0 1 63 81 20 07	0 1 63 80 20 07
S 25	PB 400	G 1 A		41	36	46	54	30	73	50	18	70.8	0 1 63 86 20 07	0 1 63 85 20 07
S 30	PB 250	G 1 1/4 A		50	41	50	62	35.5	78.5	55	20	125.7	0 1 63 91 20 07	0 1 63 90 20 07
S 38	PB 250	G 1 1/2 A		55	50	60	72	41	89	63	22	186.2	0 1 63 96 20 07	0 1 63 95 20 07

\* With union nut and 2S cutting ring

\*\* Sample product code, see:  
EVL06LROMD