

弯通接头

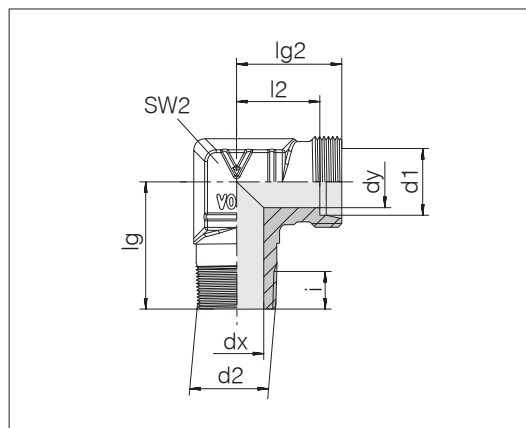
固定螺纹: BSPP 惠氏管螺纹, 圆锥形

管接头: DIN 3852-2 标准 C 型

密封方式: 锥螺纹密封

密封材料: 如 PTFE 密封带

管件连接件: 24°符合 ISO 8434-1 标准



| 系列管外径 d1 | d2 | 压力 | dx | dy | lg | lg2 | l2 | SW2 | i | kg/100 大约 | 订货号 | 名称 |
|-------------|-------|--------|----|----|----|-----|------|-----|------|--------------|------------|----------------------------------|
| S 6 | R 1/4 | PB 630 | 4 | 4 | 26 | 23 | 16 | 14 | 9.3 | 5.4 | 0716502000 | 24-SDE-S6-R1/4T-P ¹⁾ |
| S 8 | R 1/4 | PB 630 | 5 | 5 | 27 | 24 | 17 | 17 | 6.2 | 7.0 | 0716552000 | 24-SDE-S8-R1/4T-P ¹⁾ |
| S 10 | R 1/4 | PB 630 | 5 | 7 | 27 | 25 | 17.5 | 19 | 6.2 | 9.3 | 0716612000 | 24-SDE-S10-R1/4T-P ¹⁾ |
| S 10 | R 3/8 | PB 630 | 7 | 7 | 28 | 25 | 17.5 | 19 | 9.3 | 10.2 | 0716602000 | 24-SDE-S10-R3/8T-P ¹⁾ |
| S 10 | R 1/2 | PB 630 | 10 | 7 | 34 | 27 | 19.5 | 19 | 14 | 11.5 | 0716622000 | 24-SDE-S10-R1/2T ¹⁾ |
| S 12 | R 3/8 | PB 630 | 8 | 8 | 28 | 29 | 21.5 | 22 | 9.3 | 12.7 | 0716652000 | 24-SDE-S12-R3/8T-P ¹⁾ |
| S 12 | R 1/2 | PB 630 | 11 | 8 | 34 | 29 | 21.5 | 19 | 10.4 | 10.3 | 0716672000 | 24-SDE-S12-R1/2T ¹⁾ |
| S 14 | R 1/4 | PB 630 | 7 | 10 | 30 | 30 | 22 | 19 | 9.3 | 9.3 | 0716732000 | 24-SDE-S14-R1/4T ¹⁾ |
| S 14 | R 3/8 | PB 630 | 8 | 10 | 30 | 30 | 22 | 19 | 9.3 | 9.7 | 0716712000 | 24-SDE-S14-R3/8T ¹⁾ |
| S 14 | R 1/2 | PB 630 | 10 | 10 | 32 | 30 | 22 | 19 | 10.4 | 10.5 | 0716702000 | 24-SDE-S14-R1/2T ¹⁾ |
| S 16 | R 1/2 | PB 400 | 12 | 12 | 32 | 33 | 24.5 | 24 | 14 | 13.9 | 0716752000 | 24-SDE-S16-R1/2T ¹⁾ |
| S 16 | R 3/4 | PB 400 | 16 | 12 | 42 | 33 | 24.5 | 27 | 12.4 | 18.9 | 0716772000 | 24-SDE-S16-R3/4T ¹⁾ |
| S 20 | R 1/2 | PB 400 | 12 | 16 | 40 | 37 | 26.5 | 27 | 10.4 | 21.6 | 0716812000 | 24-SDE-S20-R1/2T ¹⁾ |
| S 20 | R 3/4 | PB 400 | 16 | 16 | 42 | 37 | 26.5 | 27 | 12.4 | 21.7 | 0716842000 | 24-SDE-S20-R3/4T ¹⁾ |

¹⁾ 标准尺寸

所述工作过压 PB 630
仅适用于带有
锥形螺纹的旋入孔存在的情况。

